

# Air Pump

## HYDRAULIC PA60 SERIES

**98 cm<sup>3</sup>/min.**  
Two-Speed

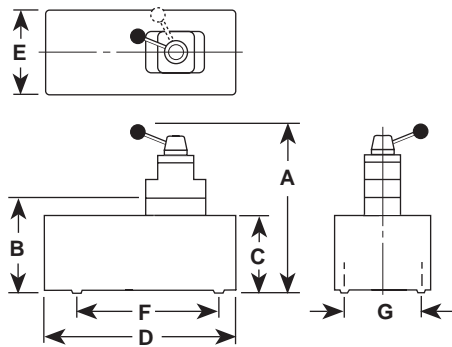
Two-speed pump for rapid oil delivery at low pressure quickly advances cylinder or tool.

PUMPS

- Equipped with air pressure regulator, air filter and lubricator.
- Serviceable air motor for economical repair.
- Internal relief valve protects circuit components.
- Permanently vented reservoir cap.

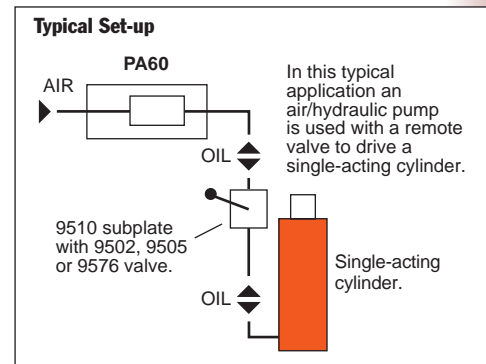
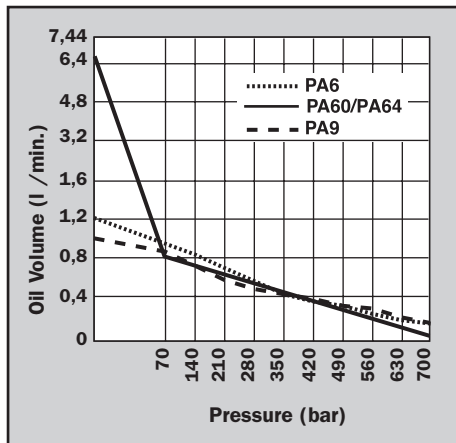
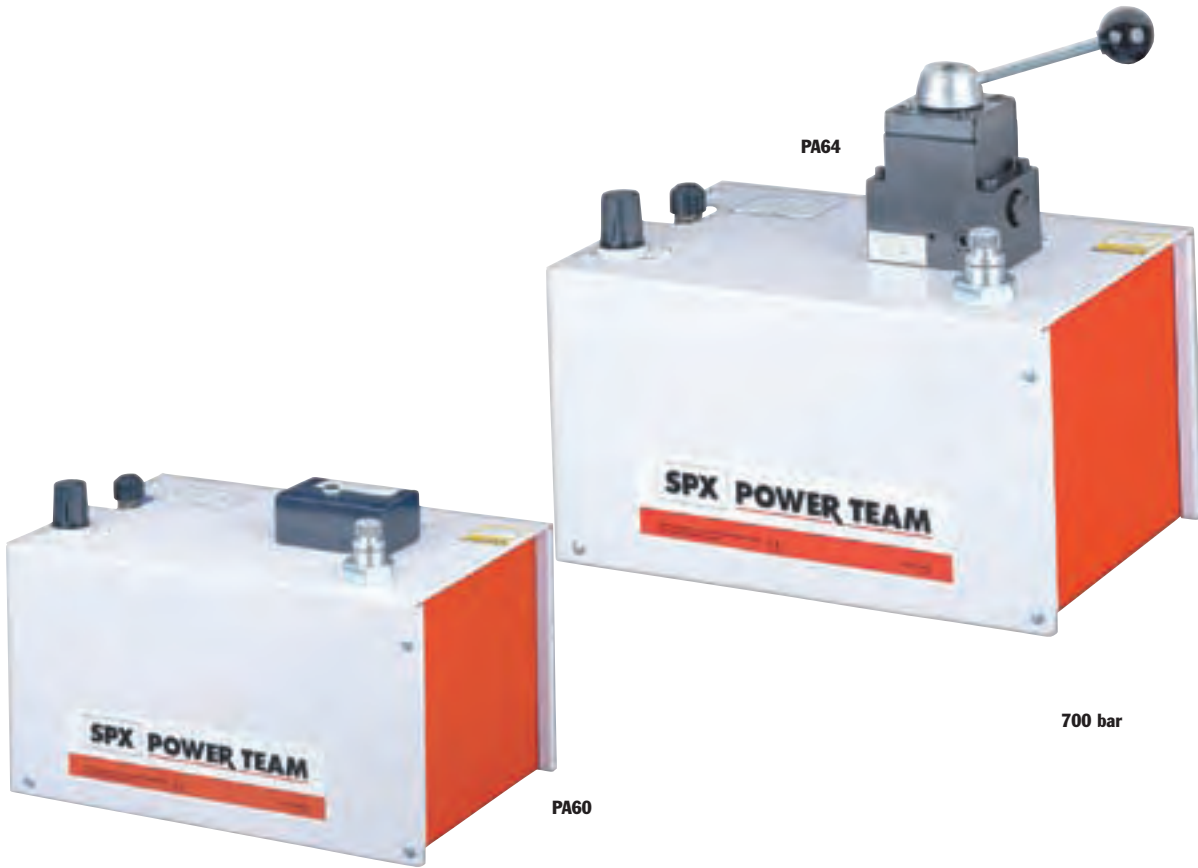


The PA60 used in a workholding environment.



Pump No.	A (mm)	B (mm)	C (mm)	D (mm)	E (mm)	F (mm)	G (mm)	Max. Pressure Output bar	Oil Del. * (l/min)				
									0 bar	7 bar	70 bar	350 bar	700 bar
PA60	—	240	206	362	244	181	130	700	6,24	5,6	0,8	0,19	0,1
PA64	362	—	206	362	244	181	130	700	6,24	5,6	0,8	0,19	0,1

\* Typical delivery. Actual flow will vary with field conditions.



Description	Order No.	Valve No.	Valve Function	Air Supply Req'd bar	Reservoir Cap. (l)	Reservoir Usable (l)	Oil Port (in)	Prod. Wt (kg)
For use with remote valves.	<b>PA60</b>	Manifold	—	3 - 8	7,6	6,8	$\frac{3}{8}$ -NPTF	24,5
For use with single- or double-acting cylinders.	<b>PA64</b>	9507, 3-way/4-way	Advance Hold Return	3 - 8	7,6	6,8	$\frac{3}{8}$ -NPTF	24,5

**Notes:** Air inlet port  $\frac{1}{4}$ " NPTF. Requires 570 l at 7 bar shop air pressure at the pump.

