

Sales/Customers Power Team got/kept because of pump quality/features

### OEM:

- Major U.S. torquing manufactures
  
- Major U.S. frame straightening manufactures
  
- Major U.S. rescue manufactures
  
- Major U.S. tensioning & work hardening manufactures
  
- Major hose crimping manufactures

### Pumps:

- PE55, PA55, PQ60, PQ120, PE200 & PQ400 Series
  
- PE17 & PE46 Series
  
- PG55, PG120 & PG18 Series
  
- PE55, PE17, PA55, PA17, & PA46 Series
  
- PE17, PE46, PE120, PE10, PE17 & PE30 Series

### Reasons:

- Torque wrench manufactures have used these pump for years  
Have held off all challengers (Titan pump)  
Have cultivated lasting relationship by making some features proprietary to specific customers  
Durability, reliability and integrity are the reasons that we remain strong in this market
- Pump reliability  
Starting under load  
High temperature  
Proprietary modifications
- Pump reliability  
Gas engine compatibility  
Compact packages  
Proprietary modifications
- Reliability  
Ability to modify to customer requirements  
proprietary modifications
- Durability  
Reliability  
Ability to modify to fit the customers requirements

# SPX **POWER TEAM**<sup>®</sup>

## Pumps



- Hand
- Reciprocating Air
- Hydraulic Intensifier



### Power Pumps

- Universal/Permanent Magnet Driven (Including Battery Operated)
- Capacitor/Induction Driven



- Rotary Air Driven
- Gasoline Driven

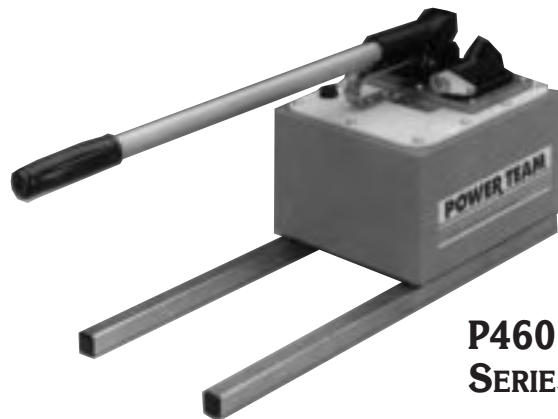
The Power Team hand pump line includes a variety of styles and sizes including single and two-speed models. These pumps are also available in a variety of custom configurations to fill our customers' specific applications.



**P19**



**P55**



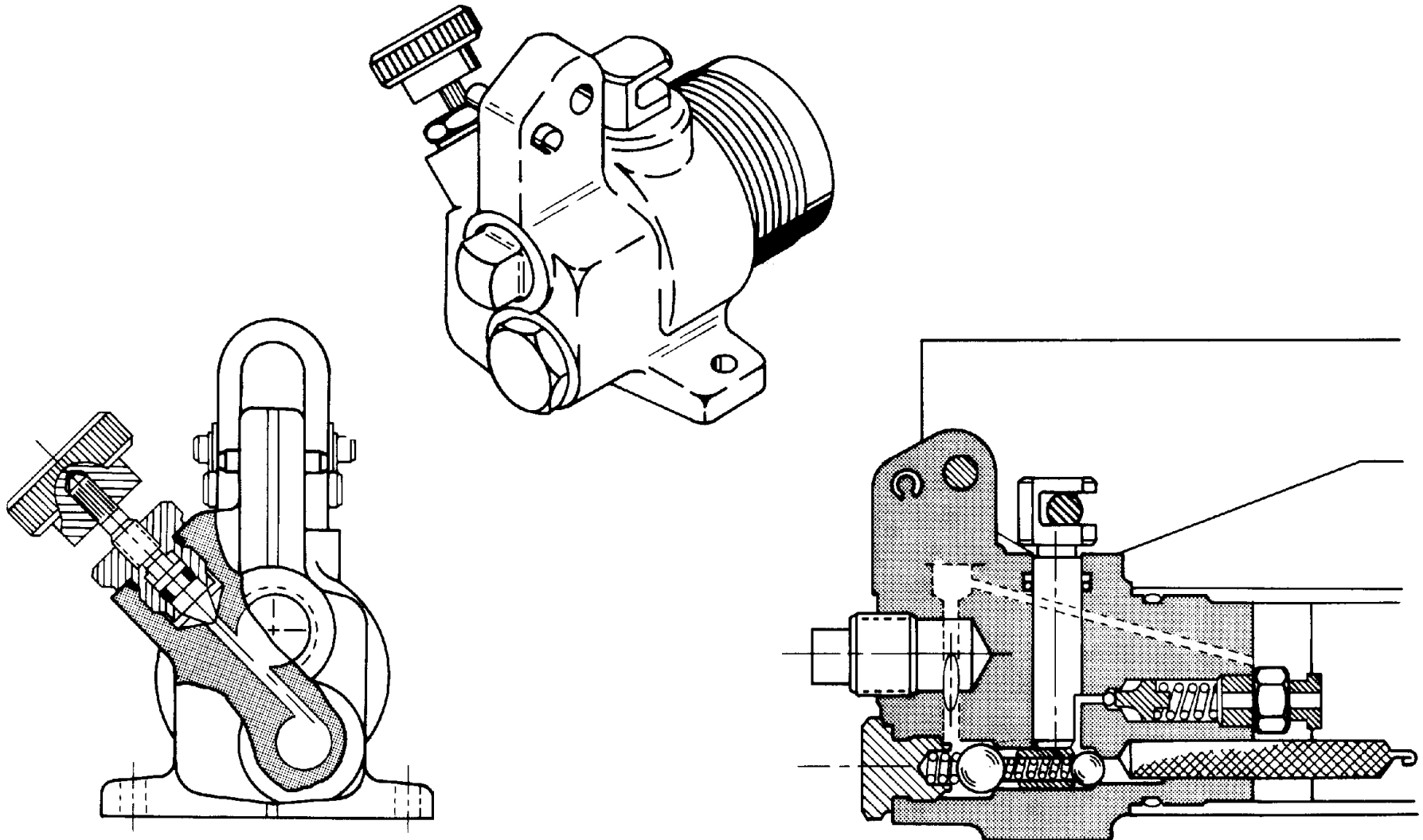
**P460  
SERIES**

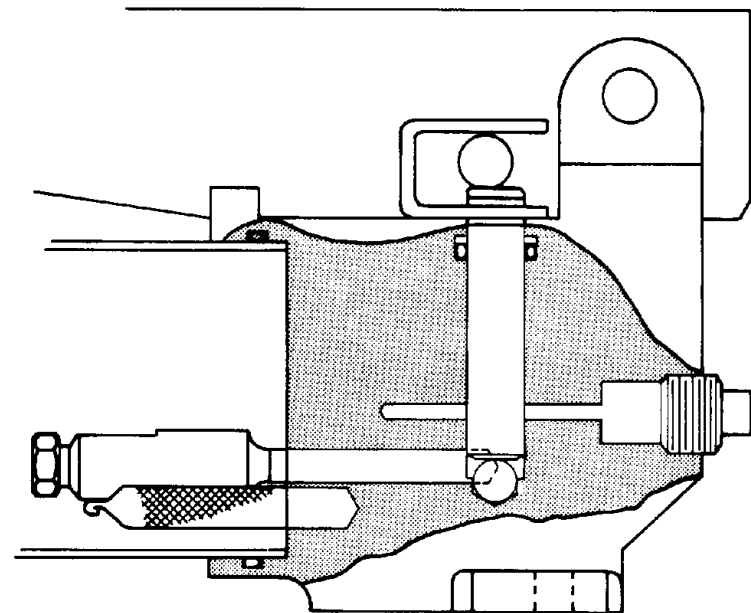
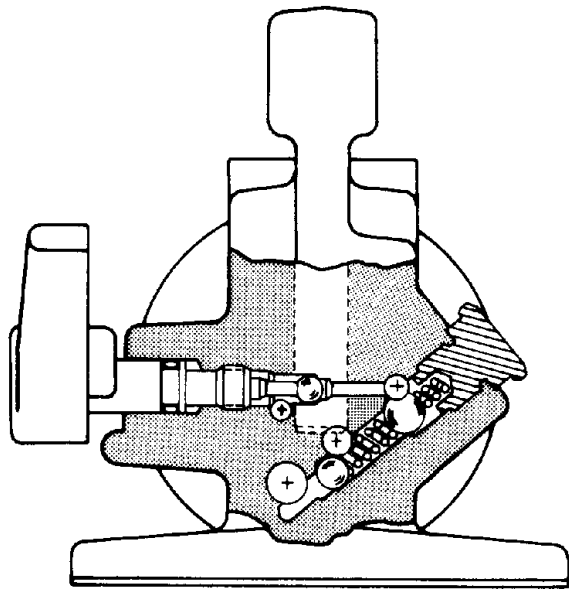
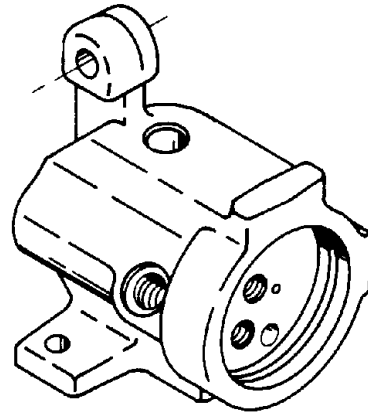
### Features:

- Rugged all metal construction
- Heavy-duty, formed sheet metal handle
- Carry handles on all models (except P12, P19, P23)
- Fill cap seal acts as safety valve (except P12 & P300)
- Two-speed models available
- A variety of reservoir sizes
- Heat treated handle bearing surfaces (only P157/P159D)
- Max safety relief valve
- All units 100% tested
- Relief valve inboard of check valve system
- Convenient fill cap
- Rugged large round knob

### Benefits:

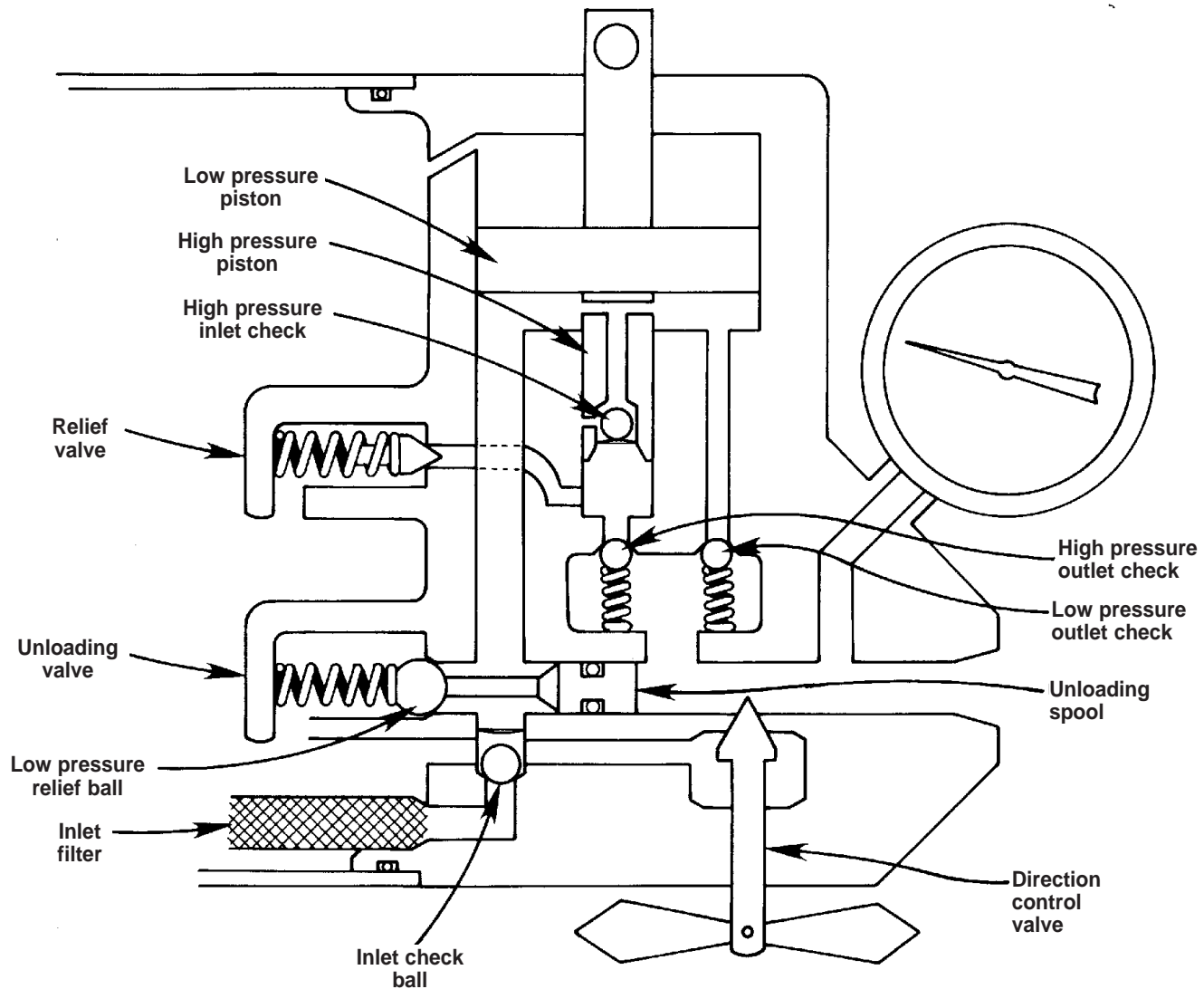
- Strength and durability
  - Doesn't burn thru in welding environments
- Less flex, less operator fatigue than round steel and composite handles
- Easy to transport
- Prevents over-pressurizing reservoir
- Reduces handle strokes so you work faster and easier
- The right capacity for any application
- Longer service life
- Limits system pressure to 10,000 PSI (700 bar)
- Assurance of quality
- Prevents loads from drifting down. Does not provide protection when additional weight is added to system.
- Allows pumps (except P12 & P460) to be filled horizontally when mounted. Many models can be filled vertically.
- Ease of use





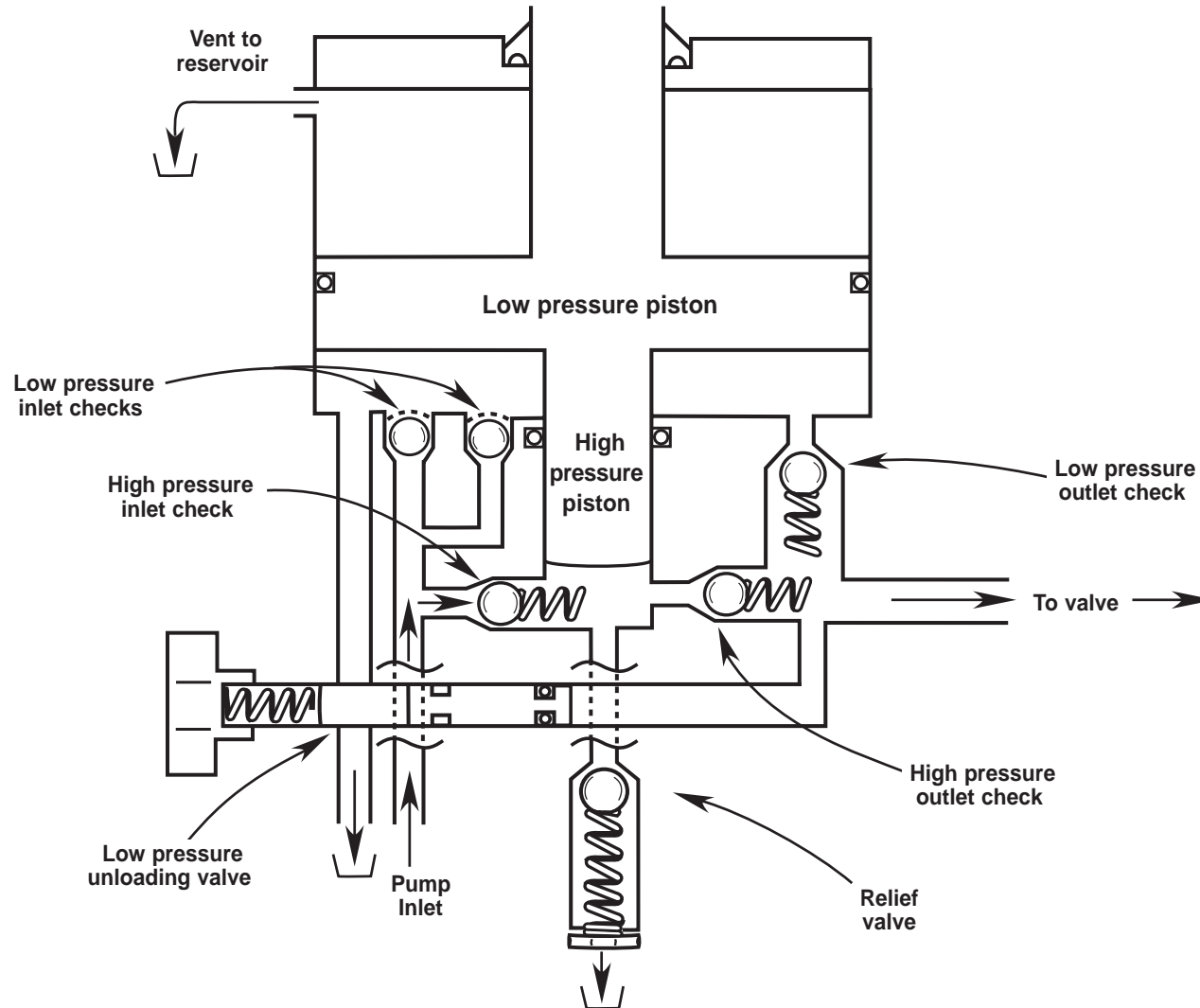
## 2 Stage Hand Pump

## Operation



## P460 Series - Model "D"

## Operation



## Reciprocating/Air Hydraulic

## Pumps

For OEM's as well as maintenance and production people around the world, this is the pump of choice. With more than 25 years of proven performance and continual improvement, the PA6 series of air/hydraulic pumps offers dependability, versatility and convenience wherever air is the preferred power source.

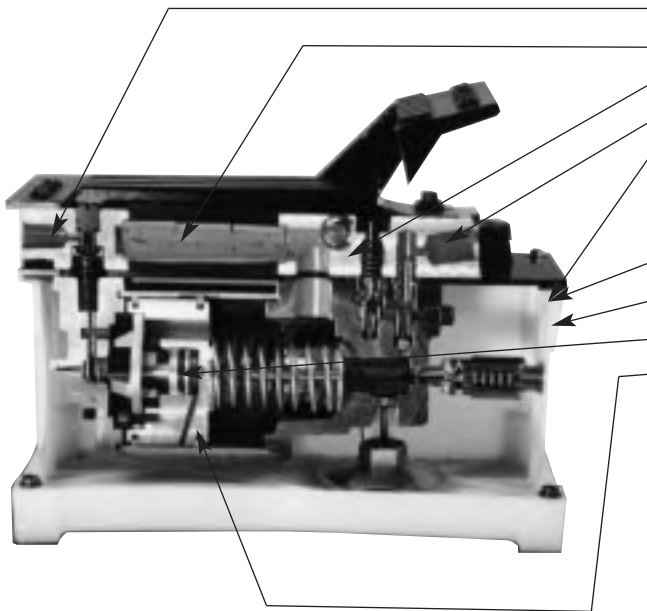
The most copied air/hydraulic pump in the world (PA6).

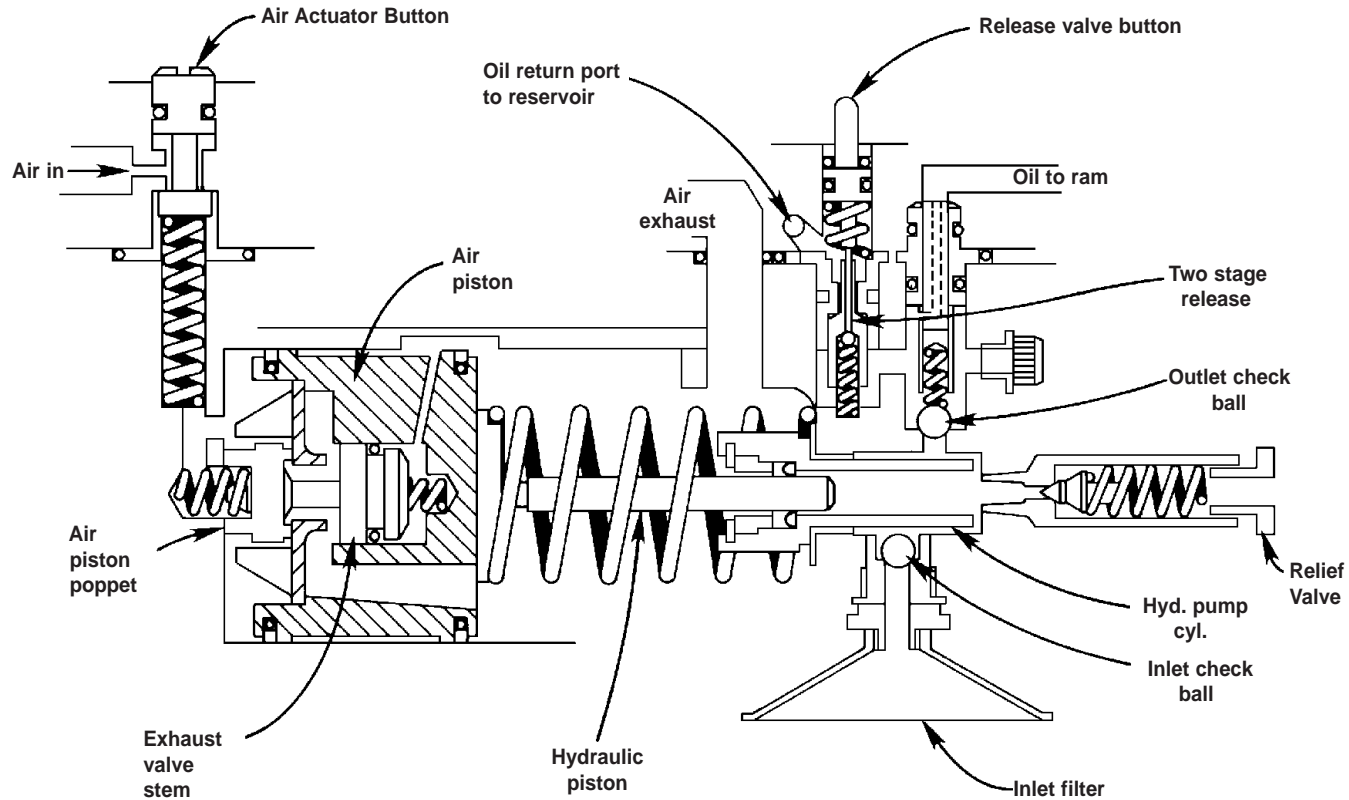
### Features:

- Air inlet filter
- Foam muffler
- Two-stage release valve
- Filter in outlet port
- HDPE or metal reservoirs
- Wide variety of models and options
- See-thru reservoir (HDPE)
- Standard or large reservoirs available
- All-metal air motor
- Serviceable air motor (not a throw away)
- All units 100% tested

### Benefits:

- Protects air motor for reliable performance
- Quieter operation
- Gives you complete, metered control
- Protects pump from contaminated systems
- Suits your application's requirements
- Choose the best, most economical combination for your requirements
- Lets you check oil level from any angle
- Suits your application's oil requirements
- Long dependable service
- Economical repair
- Assurance of quality





## Hydraulic Intensifier

## Pumps

Uses include utilities, railroads, construction riggers others. Operates off low pressure hydraulic portable pumps as well as many vehicle on-board hydraulic systems.\*

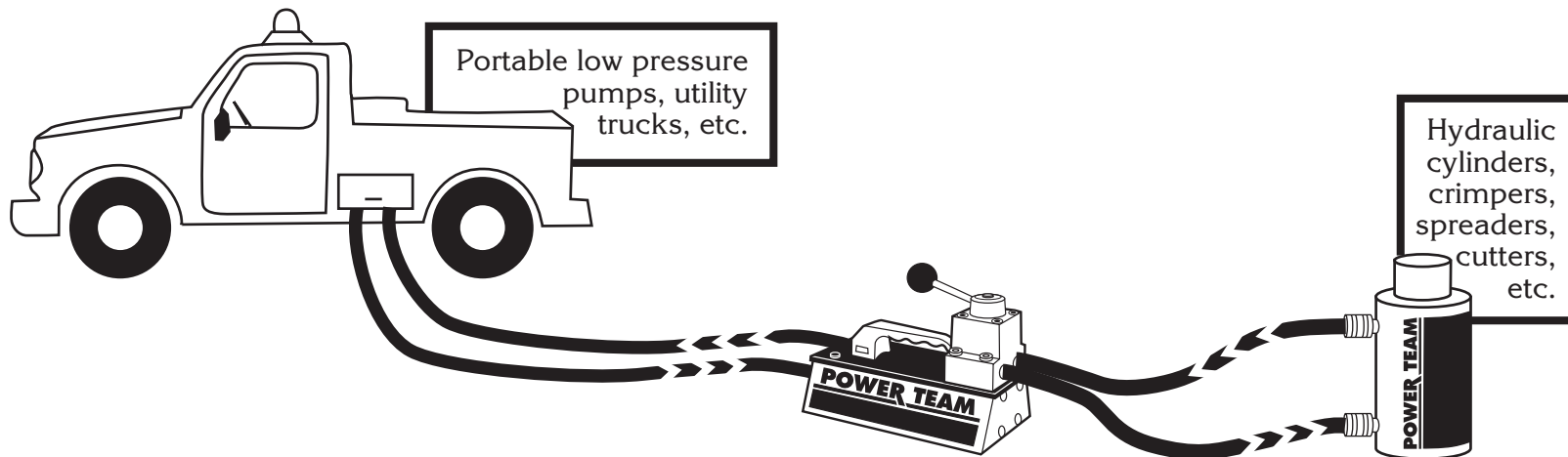


### Features:

- Pressure ratio of 5 to 1
- Operates either single-acting or double-acting cylinders and tools such as crimpers, spreaders, cutter etc.
- May be used to operate two separate, single-acting tools (with integral valves) independently
- Compact, rugged and portable.
- Valve options available
- Unit uses oil from low pressure pump source
- 3/8 NPTF ports

### Benefits:

- Turns low-pressure portable hydraulic pumps or on board hydraulic systems into high-pressure power sources(2000 psi/140 Bar to 10,000 psi/700 Bar).
- Wide range of options
- No need for additional manifold
- Great for use inside a utility bucket or storing in a vehicle
- Added versatility
- No oil reservoir to maintain
- Compatible with standard fittings for low & high pressure systems



\*Note: Input flow must be limited to 10 GPM to prevent overheating. Ideal input is 5-10 GPM at 2000 psi.

## Power Pumps

All power pumps are 100% tested and are super charged thus avoiding sticking pistons with dirty oil and no broken return spring problems.



### **Universal/Permanent Magnet Driven Motors**

- Lighter than comparable induction motor pumps
- Intermittent duty



### **Capacitor/Induction Driven Motors**

- Longer life than Universal/Permanent Magnet motor pumps
- Continuous running
- Availability of 3 phase motors



### **Rotary Air Driven Motors**

- Used in explosive environments



### **Gasoline Driven Engines**

- Does not need an external power supply

## Universal/Permanent Magnet Driven



**PE18  
SERIES**

**VANGUARD**



**PE30  
SERIES**

**VANGUARD**



**PE55 SERIES**

**VANGUARD**



**PE10  
SERIES**

### Highlights:

- Starts and runs at low voltage. Will run down to 60% of nominal voltage
- Starts under full load
- Runs on 50/60 cycle power
- Can be run on DC voltage with special switches
- Highest flow per weight ratio of any pump style (universal motors)
- Motors are single phase and are rated at intermittent duty as per CSA definition (30 min. full load)
- Lighter than comparable Capacitor/Induction motor pumps
- Flow rates the same whether 50 or 60 cycle
- Suitable for use with long extension cords
- Pioneer in this type of pump - 1958

All these pumps are two-speed with a roller vane type pump providing low pressure, high volume and an axial piston pump providing high pressure.  
A high noise level ranging from 85 - 90 dBA. Motors are single phase and are CSA rated for intermittent duty.  
Pumps are ideal to use with small hydraulic tools.



### Features:

- Lightweight
- Integral valving
- Low amp draw
  
- Large variety of valve options
- Universal motor
- CSA approved

### Benefits:

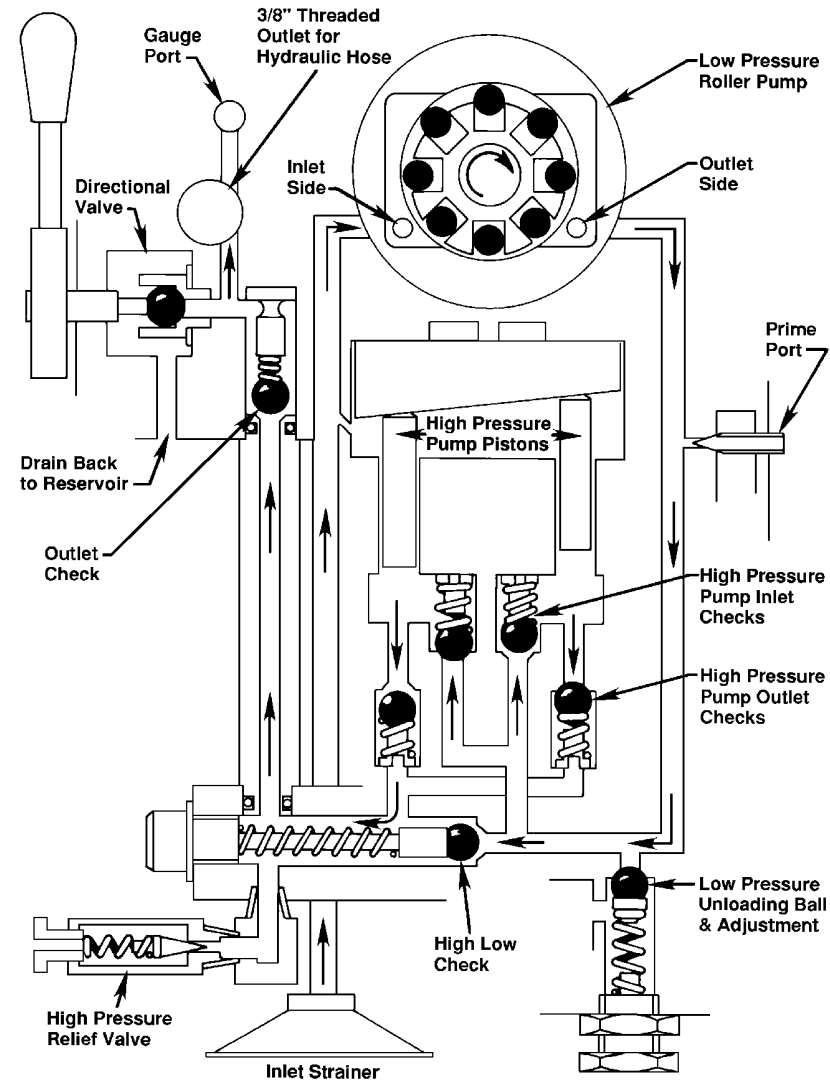
- Very portable
- Keeps the pump small and compact
- Can be used with smaller generators and low amp circuits
- Allows pump to be used in a large variety of applications
- Low voltage capability
- Assurance that the electrical is built to an identifiable standard

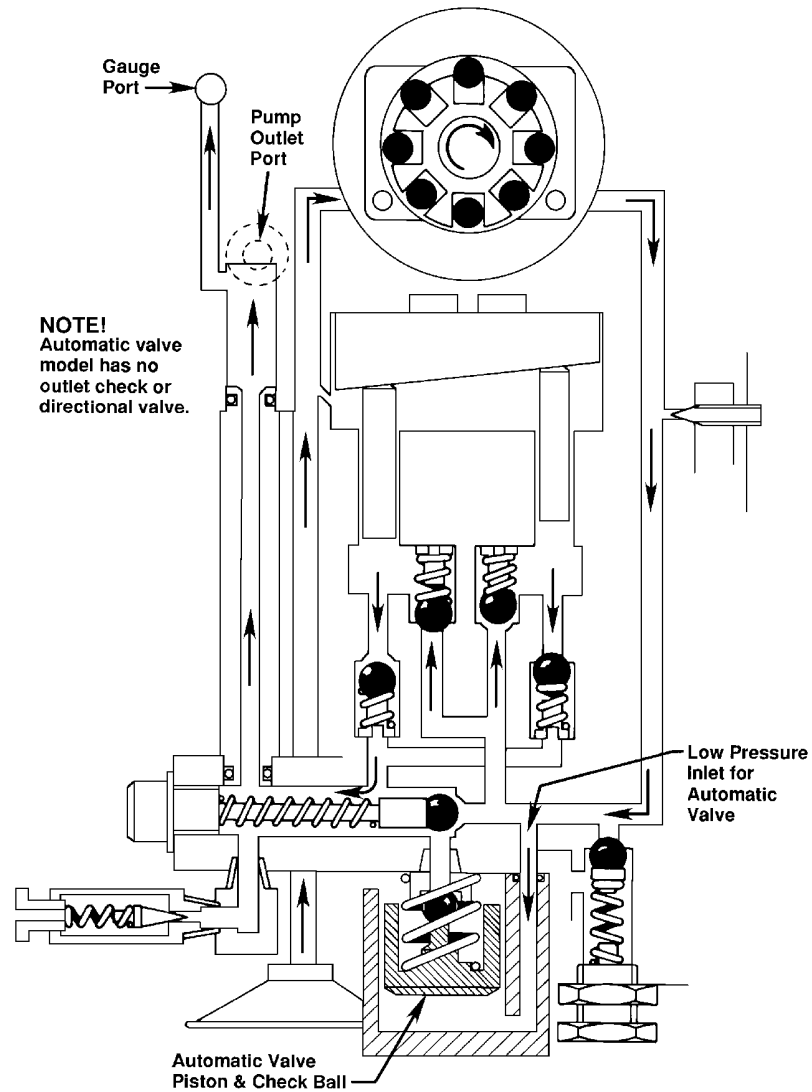
### Specifications:

- 1/2 hp 115/110 or 220/230 50/60 Hz motor  
10 amp 115; 5 amp 230
- Reservoir capacity 104 in.<sup>3</sup> usable or 525 in.<sup>3</sup> usable
- All units have a remote control
- Flows: 190 in.<sup>3</sup>/min. at 100 psi  
18 in.<sup>3</sup>/min. at 10,000 psi
- Weight 30 lbs.

## PE18 Series

## 3 or 4 Way Valve Operation





With these pumps, the low-pressure high-volume (gerotor design) stage provides fast ram piston travel. When high force is needed, the high pressure, low volume (radial piston design) stage takes command. A noise level range between 82 - 87 dBA. Motors are single phase and are CSA rated for intermittent duty. Ideal usage for all around general construction applications where low voltage is a possibility.



### Features:

- True unloading valve
- Permanent Magnet motor
- Choice between a 1 gallon (3.79 liters) and 1.75 gallon (6.63 liters) reservoir
- Light weight and integral roll cage carry handle
- 24 volt control circuit on all units with remote controls
- Wide range of standard valve options
- CSA approved

### Benefits:

- Allows for higher flows at lower amp draw (efficiency)
- Has the same low voltage capability as the Universal motor, but has a lower dBA (noise level) rating
- The customer can pick the pump that fits his application
- Portable pump, with roll cage protection for the motor and controls
- User/Operator safety
- The customer can better fit his application
- Assurance that the electrical is built to an identifiable standard

### Specifications:

- 1 hp 110/115 or 220/230 50/60 Hz motor  
13 amp 115 vac. 6.5 amp 230 vac.
- Reservoir capacity 280 in.<sup>3</sup> usable or 380 in.<sup>3</sup> usable
- Flows: 300 in.<sup>3</sup>/min. at 100 psi  
30 in.<sup>3</sup>/min. at 10,000 psi
- Weight 41 lbs. & 49 lbs.