

PE55 Series

Pumps

This series of "Universal - gear/axial piston" design of pumps were first developed and introduced in 1958 and has continually been improved.

This is a rugged pump that will stand up to years of rough treatment, for example, some of our original pumps are still in service.

A high noise level range between 90–95 dBA. Motors are single phase and are CSA rated for intermittent duty. This is a proven pump in many of the toughest applications. It is and has been the mainstay for the heavy construction industry and the concrete stressing industry world wide and is CE approved.



Features:

- CSA approved
- 24 volt control circuit on all building block units with remote controls
- A large variety of valve options available on standard catalog part numbers. (See catalog for details)
- True unloading valve
- Reservoirs available in sizes up to 10 gallons
- "Universal" Motor
- Light weight/portable

Specifications:

PE55

- 1-1/8 hp 110/115 or 220/230 50/60 Hz motor
25 amp 115 vac. 12.5 amp 230 vac.
- Reservoir capacity 525 in.³ usable
- Flows: 650 in.³/min. at 100 psi
55 in.³/min. at 10,000 psi
- Weight 65 lbs

Benefits:

- Assurance that the electrical is built to an identifiable standard
- User/operator safety
- The customer can order the pump he needs for his application (Also see Building Block and ATO sections)
- Achieves greater pump efficiency, allowing higher flows at maximum pressure
- Allows customer to use larger or multiple cylinders/rams
- Starts and runs at reduced voltage
- Best weight to performance ratio of all Power Team electric pumps

PED25

- 1-1/2 hp 115/230 60 Hz or 110/220 50 Hz motor
22 amp 115 or 11 amp 220
- Reservoir capacity 1000 in.³ usable
- Flows: 300 in.³/min. at 100 psi
25 in.³/min. at 10,000 psi
- Weight 170 lbs

Improved serviceability of the already most easily maintained pump on the market



Features:

- On/Off/Jog Motor control switch standard
- Optional fan oil cooler
- Pump is 18 lbs. lighter than Enerpac PUM3805DPT.
- Maintained superior first stage oil delivery of 650 cu. in. at 100 psi per min.
- Heavy duty bearings in high pressure pump
- Hardened high pressure pump check block
- Tool steel shear seals and improved valve rotors are standard
- Improved external pressure regulator
- Metal strain relief to retain power cord added

- Motor rain deflector skirt
- Added bladder & totally sealed hydraulic pump

Benefits:

- More versatility
- Prevents pump from overheating
- Easier to use and handle
- Faster than competition

- Increased pump life
- Increased pump life
- Increased pump life

- Quieter and easier to adjust
- Reduces possibility of damage to electrical components when cord is pulled
- Helps keep dirt and contamination out of motor
- Prevents airborne dirt from contaminating system oil and preventing external oil leakage.

Specifications:

- 1-1/8 hp 110/115 or 220/230 50/60 Hz motor
25 amp 115 vac. 12.5 amp 230 vac.
- Reservoir capacity 3/4 gallon usable
- Flows: 650 in.³/min. at 100 psi
55 in.³/min at 10,000 psi
- Weight 51 lbs

Improved serviceability of the already most easily maintained pump on the market



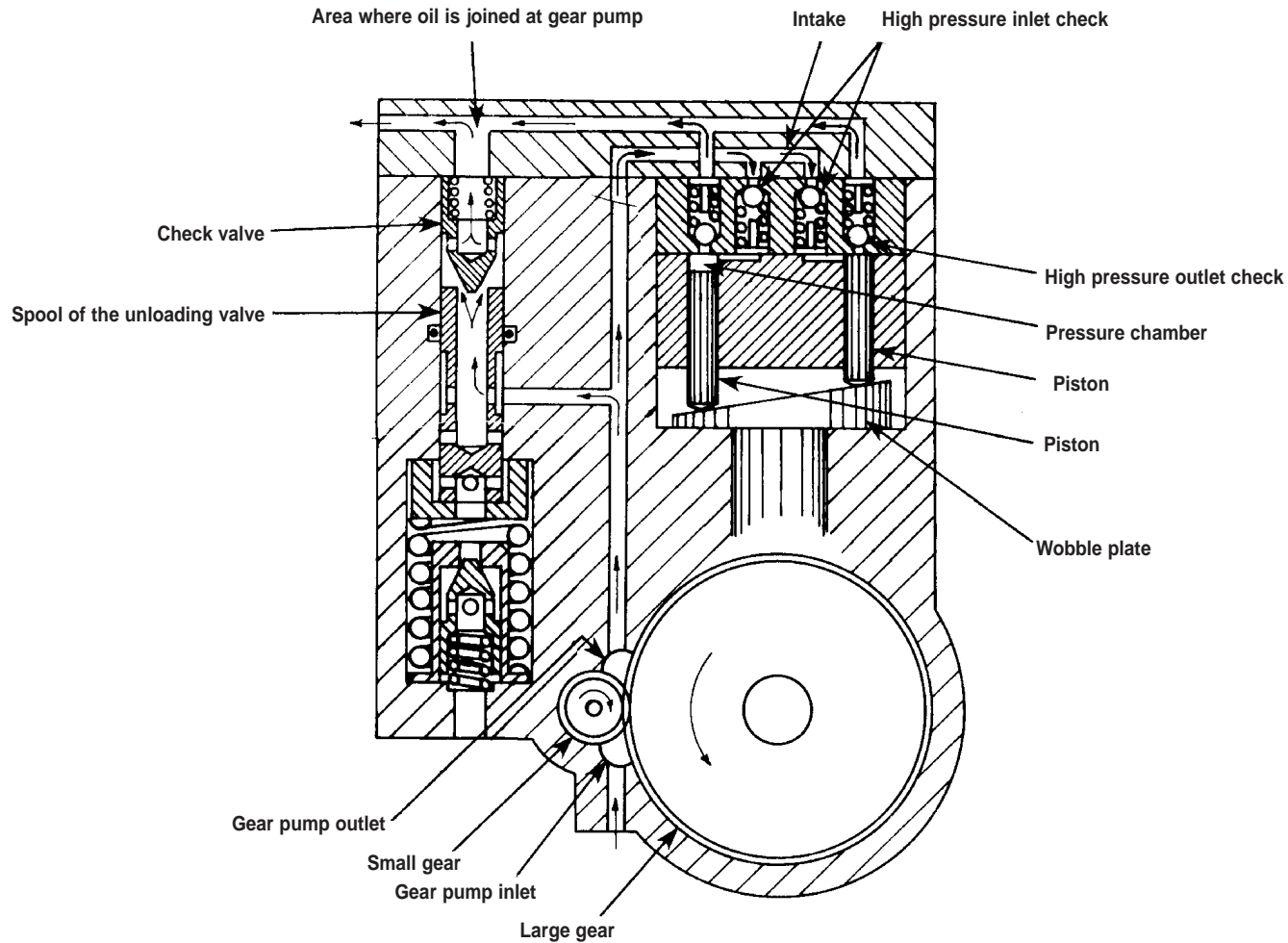
Features:

- Screw on canister filter
- Integral pressure gauge with integrated guard
- Insulated carry handle
- Improved motor insulation class
- Optimized fan (80 to 85 dba at 3' distance with 54 dba background)
- Oil level sight gauge
- Reduced pump foot print
- Added reservoir oil drain port.

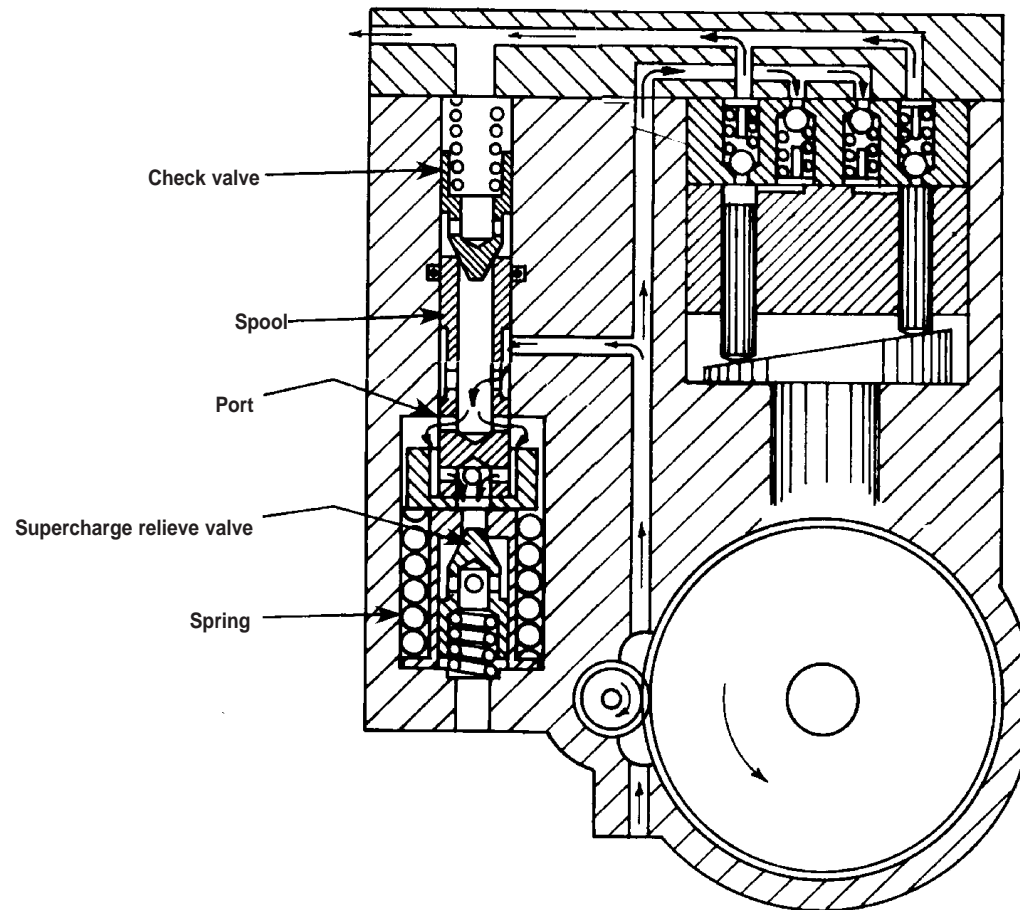
Benefits:

- Reduces pump and valve wear
- Positions gauge for easy reading while protecting it from damage
- Protect users hand from heat during long duty cycles.
- Extends motor life
- Reduced noise level
- Provides accurate oil level monitoring
- Ease of handling
- Easy to drain and flush for preventative maintenance

Low Pressure Stage



High Pressure Stage



This series of pumps are powered by a 1/4 h.p. Permanent Magnet motor - (gerotor/radial piston design). The portability of a hand operated pump with the ease and speed of a power driven pump. A low noise level range between 68 - 72 dBA. Motors are single phase or DC.

Best suited for running small portable hydraulic tools.



Features:

- Permanent Magnet motor
- Bladder type reservoir
- Available in 115, 230 volt AC, and 12 volt DC
- Lower pressure higher flow high pressure pistons available
- Lightest weight pump
- 12 volt DC unit
- External pressure regulator available as an option on all pumps
- 24 volt control circuit on all A.C. units with remote controls
- Two stage
- Valve options

Benefits:

- The same low voltage capability of the Universal motor, but with a lower dBA (noise level) rating
- The pump can be used in any direction
- Gives the customer more options to better fit his application
- Makes the pump more portable so the customer can use it in more applications
- Can run on a standard automobile battery or on the portable battery pack available thru Power Team
Longer battery life than competition
- Gives the customer more pressure options to better fit his applications (1,000 PSI/70 bar to 10,000PSI/700 bar)
- User/Operator safety
- Faster cycle times than competitive units
- More versatile than competition

Specifications:

- 1/4 hp 110/115 or 220/230 50/60 Hz or 12 VDC
6 amp 115 vac. 3 amp 230 vac. 25 amp 12 VDC
- Reservoir capacity 60 in.³ usable (bladder)
- Flows: 120 in.³/min at 100 psi
10 in.³/min at 10,000 psi
- Weight 20 lbs

SPX **POWER TEAM**

Capacitor/Induction Driven



PE200



**PE46
SERIES**

**PQ
SERIES**



**PE21
SERIES**



**PE17
SERIES**



Highlights:

- Longer life than Universal/Permanent Magnet motors
- Quiet running, lower dBA than universal motors
- Continuous running (define per CSA and Power Team definition, PE21 & PE200)
- CSA approved (except PE2000 or PE4000)
- Motors that run at 50 cycles produce 5/6 the flow of those that run at 60 cycles
- Induction motors run $\pm 10\%$ of rated voltage
- Thermal overload projection to prevent overheating

PE17 & PE84 Series

Pumps

This series of pumps are two-speed with a gerotor design providing low pressure, high volume and a radial piston design pump providing high pressure. A noise level ranging between 67-81 dBA. Motors are single phase and are CSA rated for intermittent duty. These pumps are CE approved and are ideal in a wide variety of maintenance and construction applications where low voltage is not a concern.



Features:

- Light weight
- 12 volt DC available
- 24 volt control circuit on all units with 220 volt motor remote controls

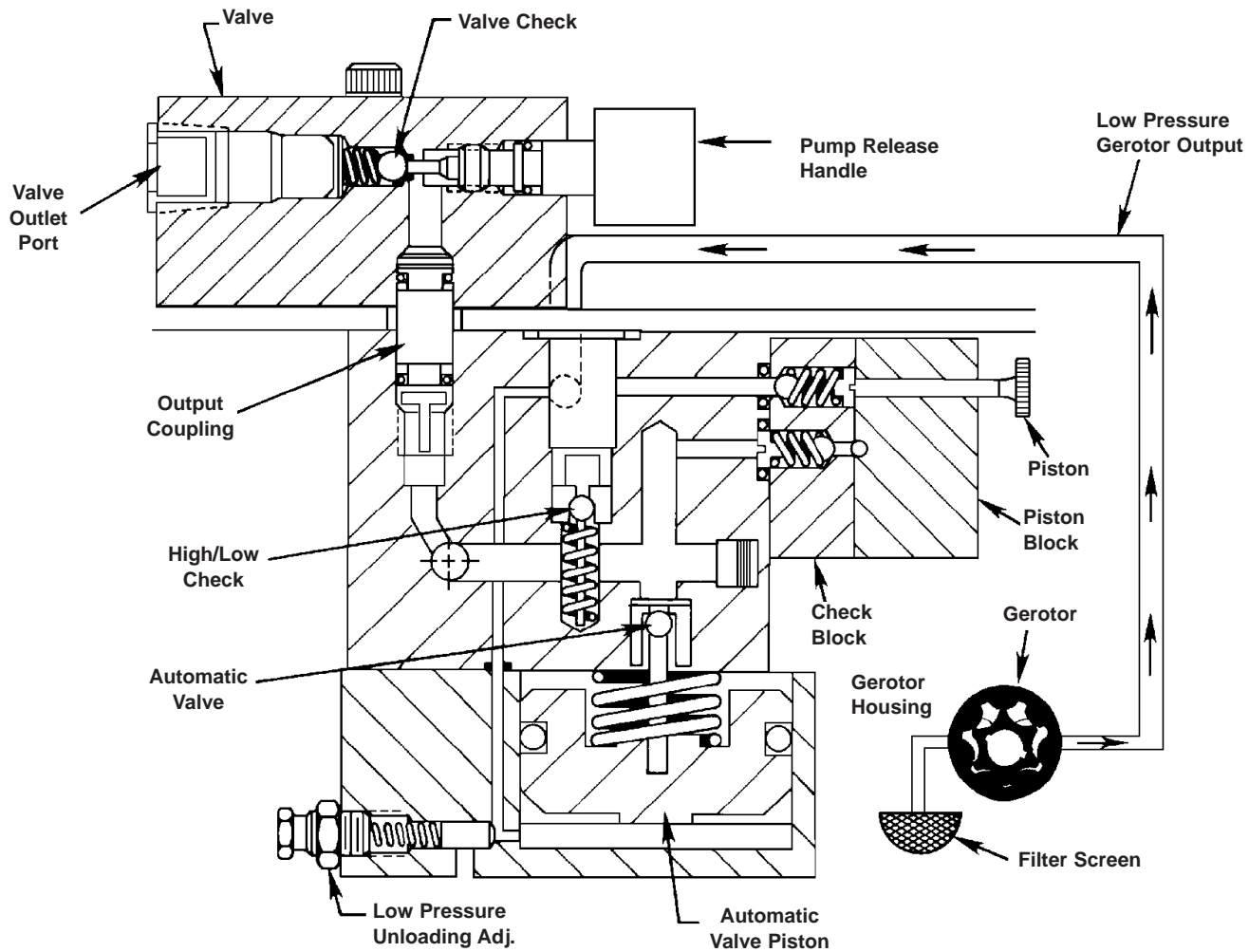
Benefits:

- Portable and easy to carry
- Can be run on a standard automobile battery
- User/Operator safety

NOTE: PE84 Series not available in 50 HZ.

Specifications:

- 1/2 hp 110/115 or 220/230 50/60 Hz motor
10 amp at 115 vac.; 5 amp at 230 vac.
- Reservoir capacity 295 in.³ usable (plastic)
375 in.³ usable (steel)
- Flows: 190 in.³/min. at 100 psi
17 in.³/min. at 10,000 psi
- Weight 45 lbs (plastic)
Weight 53 lbs. (steel)



This series of pumps are two speed with a gerotor design providing low pressure, high volume and an axial piston design pump providing high pressure. A noise level ranging between 77-81 dBA. Motors are single phase and are CSA rated for intermittent duty. These pumps are used mostly for under the roof maintenance and some production applications and are CE approved.

Features:

- Large selection of valve options
- 24 volt control circuit on all units with remote controls

Benefits:

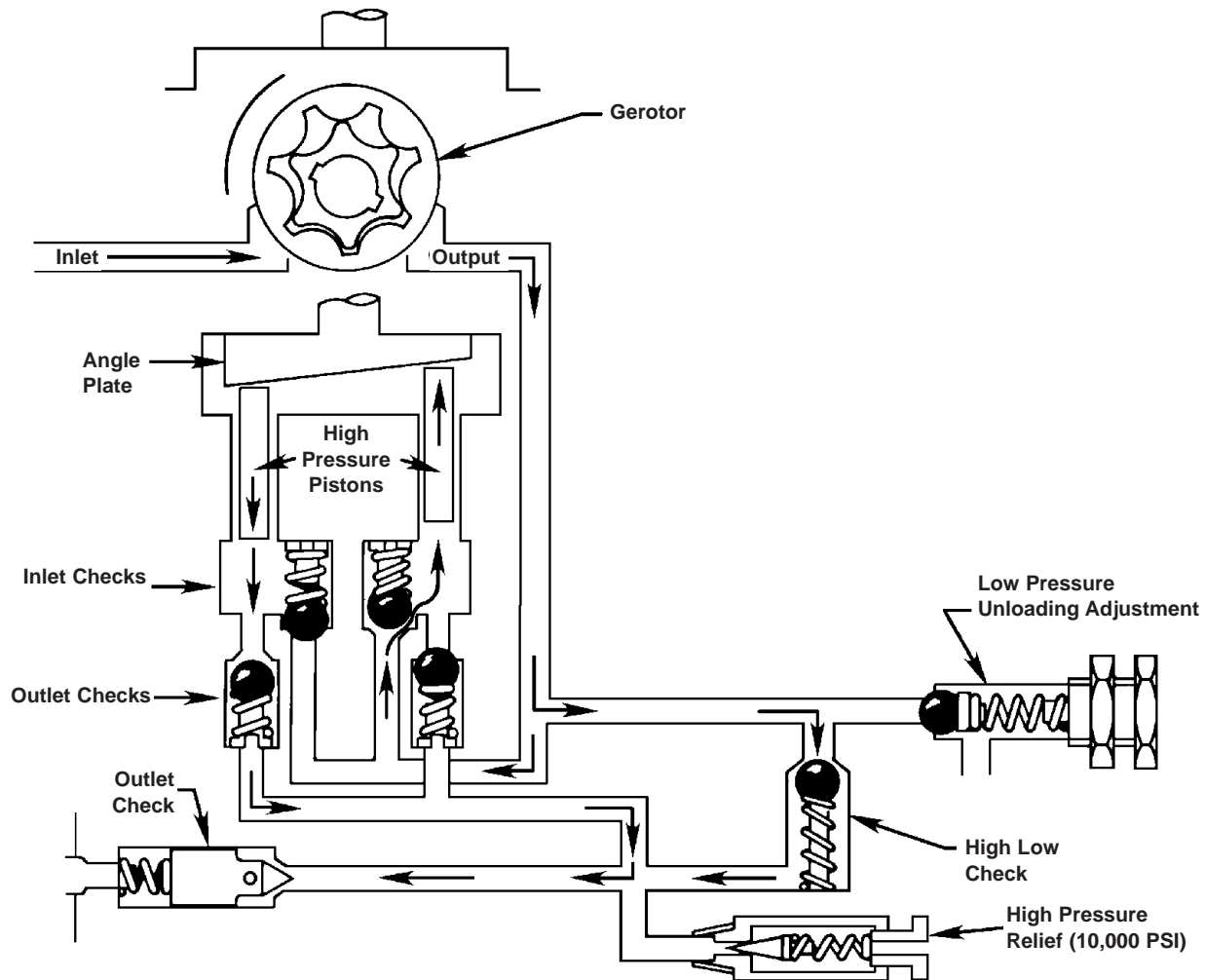
- Lets the customer select the right pump for their application
- User/Operator safety



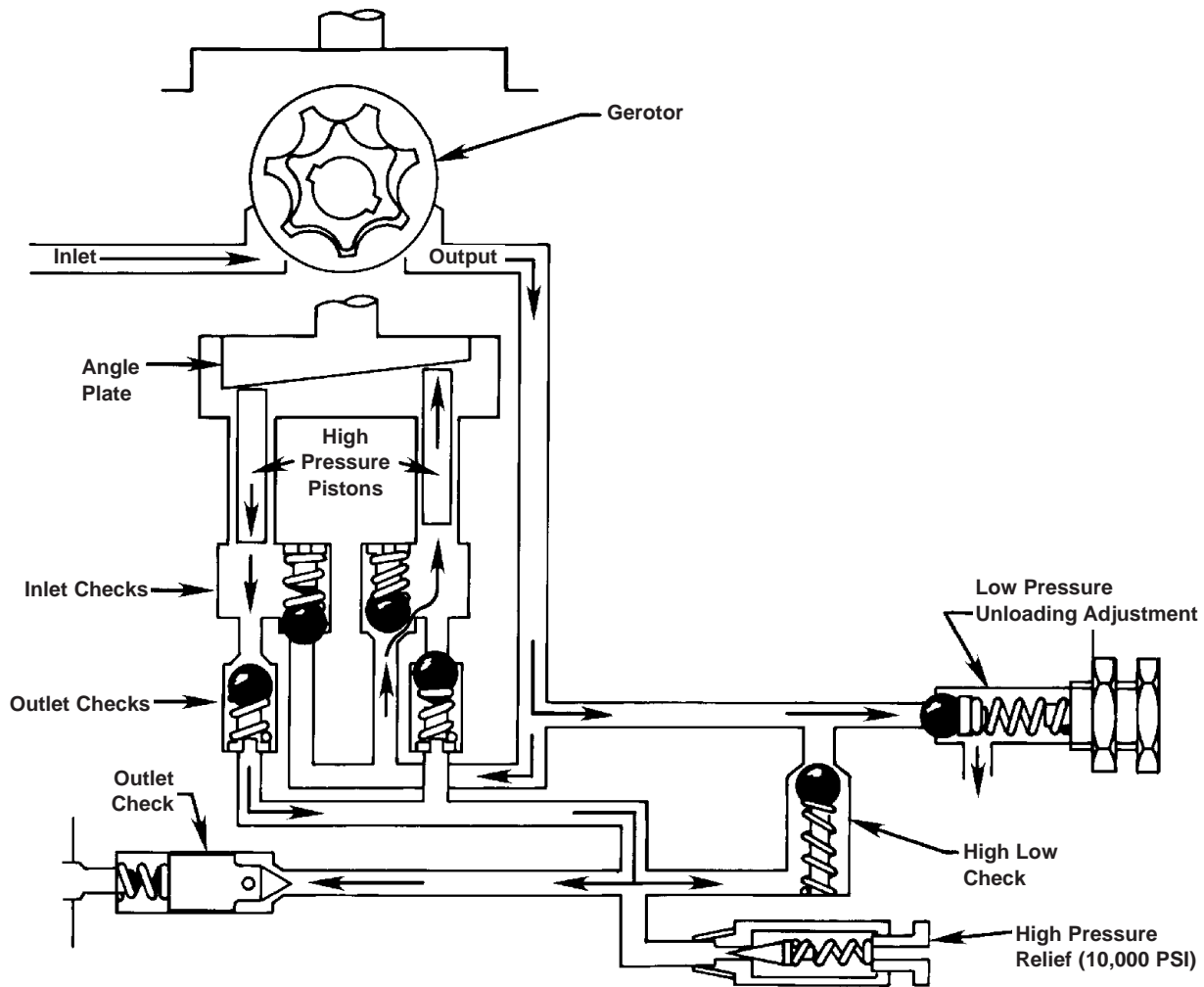
Specifications:

- 1-1/2 hp 115/230 vac. 60 Hz or 110/220 vac. 50 Hz motor
25 amp at 115 vac. 13 amp at 220 vac.
- Reservoir capacity 590 in.³
- Flows: 450 in.³/min. at 100 psi
46 in.³/min. at 10,000 psi
- Weight 79 lbs

Low Pressure Stage



High Pressure Stage



PE21 Series

Pumps

The PE21 series pumps are designed especially for heavy-duty, extended-cycle operations. A gerotor design providing low pressure, high volume and axial piston design pump providing high pressure. A noise level ranging between 73-78 dBA. Motors are single phase and are CSA rated for intermittent duty.



Features:

- PE21 has a NEMA 12 enclosure
- Very low dBA rating
- Has electrical shut down in the event of electrical interruption
- 24 volt control circuits on units with remote controls
- Low speed, high torque

Benefits:

- NEMA 12 helps keep dirt and moisture out
- Meets OSHA noise level requirements
- Pump shuts off and will not automatically start up until the operator presses the pump start button
- User/Operator safety
- Designed for heavy-duty, extended cycle operation

Specifications:

- 1 hp 115/230 vac. 60 Hz or 110/220 50 Hz motor
15 amp at 115 vac.; 7.5 amp at 220 vac.
- Reservoir capacity 590 in.³ usable
- Flows: 270 in.³/min. at 100 psi
22 in.³/min. at 10,000 psi
- Weight 98 lbs

PQ60 & PQ120 Series

Pumps

A gerotor design providing low pressure, high volume and an axial piston design pump providing high pressure. A low noise level of 70 dBA. Motors are single phase and are CSA rated for intermittent duty. Ideal for press applications.



Features:

- Metal shroud
- Very low dBA rating
- Has electrical shut down in the event of electrical interruption
- 24 volt control circuits on units with remote controls
- Low speed, high torque
- 3 phase motor has all the electrical components necessary to operate the pump in the control box

Benefits:

- Helps keep dirt and moisture out of motor and electrical
- Meets OSHA noise level requirements
- Pump shuts off and will not automatically start up until the operator presses the pump start button
- User/Operator safety
- Designed for heavy-duty, extended cycle operation
- The customer has no hidden charges when purchasing the pump

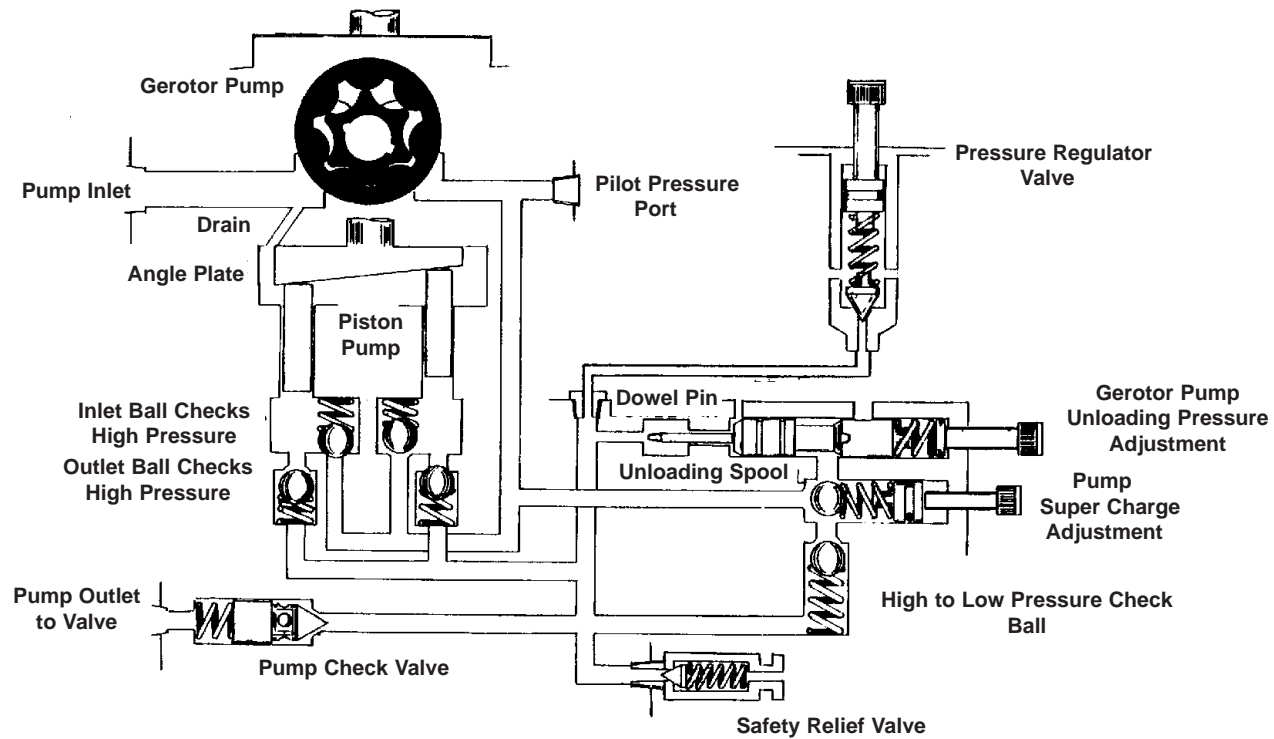
Specifications:

PQ60

- 2 hp 115/230 vac. 60 Hz or 110/220 vac. 50 Hz. motor
22 amp at 115 vac.; 11 amp at 220 vac.
- Reservoir capacity 1250 in.³ usable
- Flows: 730 in.³/min. at 100 psi
17 in.³/min. at 10,000 psi
- Weight 169 lbs

PQ120

- 3 hp 230/460 vac. 60 Hz or 220/380 vac. 50 Hz. motor
10.5 amp at 230 vac.; 5.3 amp at 460 vac.
- Reservoir capacity 1250 in.³ usable
- Flows: 730 in.³/min. at 100 psi
60 in.³/min. at 10,000 psi
- Weight 169 lbs



PE200 & PE400

Pumps

The pumps that can deliver a large quantity of high pressure oil. Use the same design found in some of our other pumps; a gerotor design providing low pressure, high volume and an axial piston design pump providing high pressure. A low noise level ranging between 73-78 DBA.

These pumps are used mostly for heavy construction and heavy maintenance operating large tonnage cylinders.



Features:

- 3 phase motor has all the electrical components necessary to operate the pump in the control box
- Has electrical shut down in the event of electrical interruption

Benefits:

- The customer has no hidden charges when purchasing the pump
- Pump shuts off and will not automatically start up until the operator presses the pump start button

Specifications:

PE200

- 7-1/2 hp 230/460 vac. 60 Hz or 220/380 vac. 50 Hz. motor
22 amp at 230 vac.; 11 amp at 460 vac.
- Reservoir capacity 3927 in.³ usable
- Flows: 1200 in.³/min. at 200 psi
200 in.³/min. at 10,000 psi
- Weight 472 lbs

PE400

- 10 hp 230/460 vac. 60 Hz or 220/380 vac. 50 Hz. motor
34 amp at 230 vac.; 17 amp at 460 vac.
- Reservoir capacity 3927 in.³ usable
- Flows: 1200 in.³/min. at 200 psi
420 in.³/min. at 10,000 psi
- Weight 492 lbs

Rotary Air Driven Hydraulic

Pumps

Air driven pumps work well in environments where gasoline or electric motors can not be used, i.e. mines, petrochemical, and other flammable or explosive environments. Power Team has pumps with a large variety of flows and weights to meet the customers needs.



PA17 Series

Gerotor design for the low pressure stage/radial piston design for the high pressure stage.

Features:

- Low weight to output ratio

Benefits:

- High flows and easy for the customer to carry around



PA46 Series

Gerotor design for the low pressure stage/axial piston design for the high pressure stage.

Features:

- Variety of valve options standard

Benefits:

- Gives customer the pump they need for their application



PA55 Series

Gear design for the low pressure stage/axial piston design for the high pressure pump.

Features:

- Same basic pump as our Vanguard Series

Benefits:

- Proven pump in the field
Long life
Dependability

Gasoline driven pumps do not need an external power supply to operate, they can be used in remote applications. Power Team has largest line of gasoline powered pumps in the industry.



PG30 Series

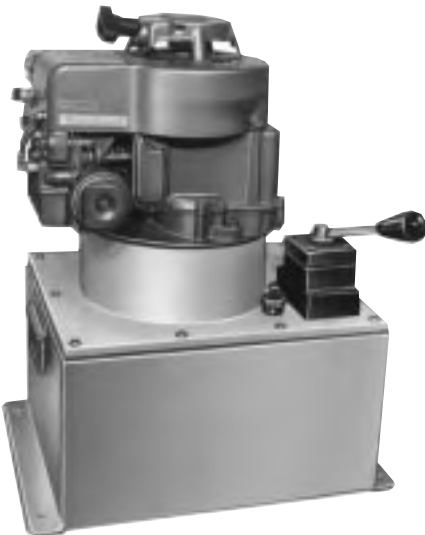
Gerotor design for the low pressure stage/radial piston design for the high pressure stage. Ideal for the railroad, rescue, and construction industries.

Features:

- 2-cycle engine
- Roll cage

Benefits:

- Lowest weight to horse power ratio of gasoline driven pumps
- Protects pump from damage



PG55 Series

Gear design for the low pressure stage/axial piston design for the high pressure stage. Ideal for the construction, rescue, and tensioning industries.

Features:

- Same basic pump as our Vanguard Series
- 4-cycle engine

Benefits:

- Proven pump in the field, Long life Dependability
- Cleaner operating, larger horse power, quieter



PG120 Series

Gear design for the low pressure stage/axial piston design for the high pressure stage. Ideal for the pier setting, bridge listing, and concrete contracting industries.

Features:

- Roll cage
- Honda engine
- A number of specialty pumps
- 4-cycle engine
- Available with remote control with electrical valve options

Benefits:

- Protects pump from damage
- Most popular with contractors
- Allows customer to pick a pump to fit his application
- Cleaner operating, larger horse power, quieter
- User/operator safety



PG4004

Gerotor design for the low pressure stage/axial piston design for the high pressure stage. Ideal for the concrete stressing industries.

Features:

- Electric start
- Roll cage
- 4-cycle engine

Benefits:

- Convenience
- Protects pump from damage
- Cleaner operating, larger horse power, quieter